

MB814405C-60/-70

CMOS 1M X 4 BIT HYPER PAGE MODE DRAM

CMOS 1,048,576 x 4 bit Hyper Page Mode Dynamic RAM

The Fujitsu MB814405C is a fully decoded CMOS Dynamic RAM (DRAM) that contains 4,194,304 memory cells accessible in 4-bit increments. The MB814405C features the "hyper page" mode of operation which provides extended valid time for data output and higher speed random access of up to 1,024-bits of data within the same row than the fast page mode. The MB814405C DRAM is ideally suited for mainframe, buffers, hand-held computers video imaging equipment, and other memory applications where very low power dissipation and high bandwidth are basic requirements of the design. Since the standby current of the MB814405C is very small, the device can be used as a non-volatile memory in equipment that uses batteries for primary and/or auxiliary power.

The MB814405C is fabricated using silicon gate CMOS and Fujitsu's advanced four-layer polysilicon process. This process, coupled with advanced stacked capacitor memory cells, reduces the possibility of soft errors and extends the time interval between memory refreshes. Clock timing requirements for the MB814405C are not critical and all inputs are TTL compatible.

PRODUCT LINE & FEATURES

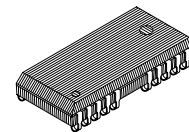
Parameter			MB814405C-60	MB814405C-70
RAS Access Time			60ns max.	70ns max.
CAS Access Time			15ns max.	20ns max.
Address Access Time			30ns max.	35ns max.
Random Cycle Time			104ns min.	119ns min.
Hyper Page Mode Cycle time			25ns min.	30ns min.
Low Power Dissipation	Operating current	Nomal Mode	336mW max.	297mW max.
		Hyper Page Mode	363mW max.	303mW max.
	Standby current		11mW max. (TTL level) / 5.5mW max. (CMOS level)	

- 1,048,576 words x 4 bit organization
- Silicon gate, CMOS, Advanced-Stacked Capacitor Cell
- All input and output are TTL compatible
- 1024 refresh cycles every 16.4ms
- Self refresh function
- Early write or \overline{OE} controlled write capability
- RAS-only, \overline{CAS} -before-RAS, or Hidden Refresh
- Hyper page mode, Read-Modify-Write capability
- On chip substrate bias generator for high performance

ABSOLUTE MAXIMUM RATINGS (see NOTE)

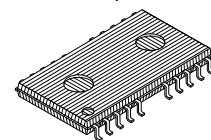
Parameter	Symbol	Value	Unit
Voltage at any pin relative to VSS	V_{IN}, V_{OUT}	-0.5 to +7	V
Voltage of V_{CC} supply relative to VSS	V_{CC}	-0.5 to +7	V
Power Dissipation	PD	1.0	W
Short Circuit Output Current	I_{OUT}	-50 to +50	mA
Storage Temperature	T_{STG}	-55 to +125	°C

NOTE: Permanent device damage may occur if the above **Absolute Maximum Ratings** are exceeded. Functional operation should be restricted to the conditions as detailed in the operational sections of this data sheet. Exposure to absolute maximum rating conditions for extended periods may affect device reliability.



LCC-26P-M04

Marking side



(Normal Bend)
FPT-26P-M01

Package and Ordering Information

- 26-pin plastic (300mil) SOJ, order as MB814405C-xxPJN
- 26-pin plastic (300mil) TSOP-II with normal bend leads, order as MB814405C-xxPFTN

This device contains circuitry to protect the inputs against damage due to high static voltages or electric fields. However, it is advised that normal precautions be taken to avoid application of any voltage higher than maximum rated voltages to this high impedance circuit.

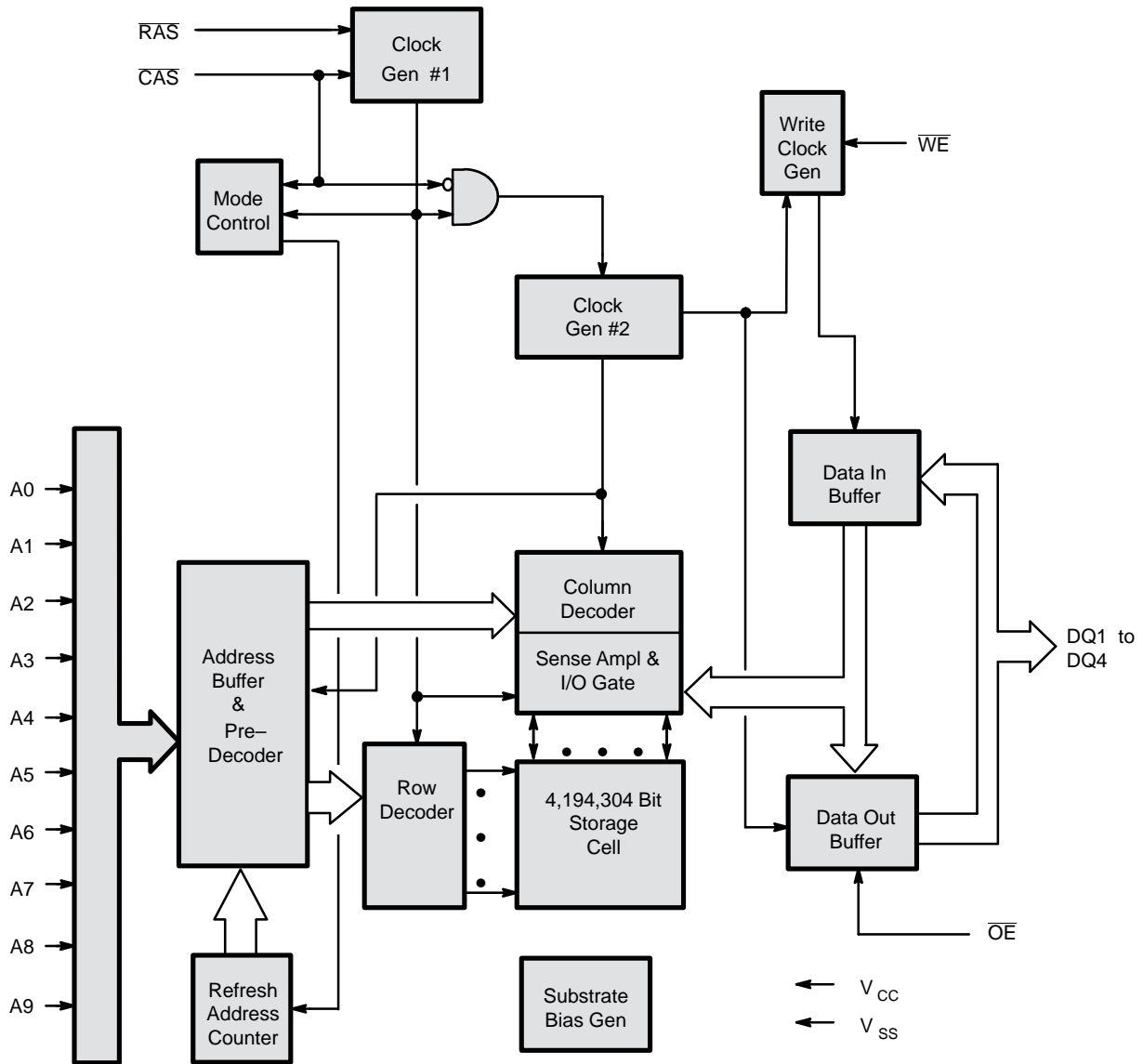
– PRELIMINARY –

Edition 2.1

MB814405C-60

MB814405C-70

Fig. 1 – MB814405C DYNAMIC RAM – BLOCK DIAGRAM



CAPACITANCE ($T_A = 25^\circ\text{C}$, $f = 1\text{MHz}$)

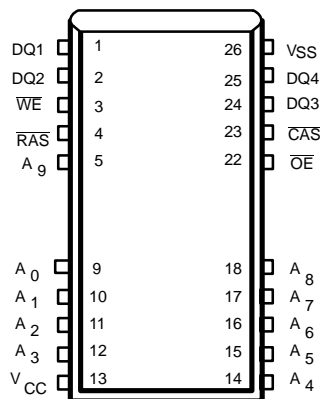
Parameter	Symbol	Typ	Max	Unit
Input Capacitance, A0 to A9	C_{IN1}	—	5	pF
Input Capacitance, $\overline{\text{RAS}}$, $\overline{\text{CAS}}$, $\overline{\text{WE}}$, $\overline{\text{OE}}$	C_{IN2}	—	7	pF
Input/Output Capacitance, DQ1 to DQ4	C_{DQ}	—	7	pF

PIN ASSIGNMENTS AND DESCRIPTIONS

26-Pin SOJ:

(TOP VIEW)

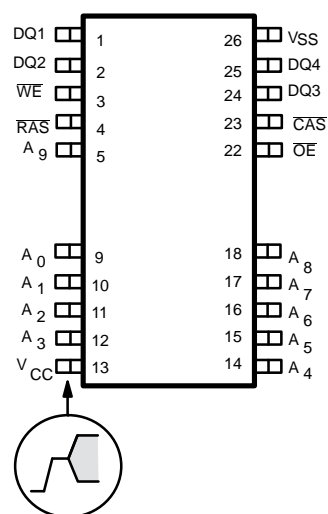
<LCC-26P-M04>



26-Pin TSOP:

(TOP VIEW)

<Normal Bend : FPT-26P-M01>



Designator	Function
DQ1 to DQ4	Data Input/ Output
WE	Write Enable.
RAS	Row address strobe.
A0 to A9	Address inputs.
VCC	+5 volt power supply.
OE	Output enable.
CAS	Column address strobe.
VSS	Circuit ground.

– PRELIMINARY –

Edition 2.1

MB814405C-60

MB814405C-70

RECOMMENDED OPERATING CONDITIONS

Parameter	Notes	Symbol	Min	Typ	Max	Unit	Ambient Operating Temp
Supply Voltage	1	V_{CC}	4.5	5.0	5.5	V	0 °C to +70 °C
		V_{SS}	0	0	0		
Input High Voltage, all inputs	1	V_{IH}	2.4	—	6.5	V	
Input Low Voltage, all inputs *	1	V_{IL}	−0.3	—	0.8	V	

* : Undershoots of up to −2.0 volts with a pulse width not exceeding 20ns are acceptable.

FUNCTIONAL OPERATION

ADDRESS INPUTS

Twenty input bits are required to decode any four of 4,194,304 cell addresses in the memory matrix. Since only ten address bits are available, the column and row inputs are separately strobed by \overline{CAS} and \overline{RAS} as shown in Figure 5. First, ten row address bits are input on pins A0–through–A9 and latched with the row address strobe (\overline{RAS}) then, ten column address bits are input and latched with the column address strobe (\overline{CAS}). Both row and column addresses must be stable on or before the falling edge of \overline{CAS} and \overline{RAS} , respectively. The address latches are of the flow-through type; thus, address information appearing after $t_{RAH}(\text{min}) + t_T$ is automatically treated as the column address.

WRITE ENABLE

The read or write mode is determined by the logic state of \overline{WE} . When \overline{WE} is active Low, a write cycle is initiated; when \overline{WE} is High, a read cycle is selected. During the read mode, input data is ignored.

DATA INPUT

Input data is written into memory in either of three basic ways—an early write cycle, an \overline{OE} (delayed) write cycle, and a read-modify-write cycle. The falling edge of \overline{WE} or \overline{CAS} , whichever is later, serves as the input data-latch strobe. In an early write cycle, the input data (DQ1–DQ4) is strobed by \overline{CAS} and the setup/hold times are referenced to \overline{CAS} because \overline{WE} goes Low before \overline{CAS} . In a delayed write or a read-modify-write cycle, \overline{WE} goes Low after \overline{CAS} ; thus, input data is strobed by \overline{WE} and all setup/hold times are referenced to the write-enable signal.

DATA OUTPUT

The three-state buffers are TTL compatible with a fanout of two TTL loads. Polarity of the output data is identical to that of the input; the output buffers remain in the high-impedance state until the column address strobe goes Low. When a read or read-modify-write cycle is executed, valid outputs and High-Z state are obtained under the following conditions:

- t_{RAC} : from the falling edge of \overline{RAS} when $t_{RCD}(\text{max})$ is satisfied.
- t_{CAC} : from the falling edge of \overline{CAS} when t_{RCD} is greater than $t_{RCD}(\text{max})$.
- t_{AA} : from column address input when t_{RAD} is greater than $t_{RAD}(\text{max})$, and $t_{RCD}(\text{max})$ is satisfied.
- t_{OEA} : from the falling edge of \overline{OE} when \overline{OE} is brought Low after t_{RAC} , t_{CAC} , or t_{AA} .
- t_{OEZ} : from \overline{OE} inactive.
- t_{OFF} : from \overline{CAS} inactive while \overline{RAS} inactive.
- t_{OFR} : from \overline{RAS} inactive while \overline{CAS} inactive.
- t_{WEZ} : from \overline{WE} active while \overline{CAS} inactive.

The data remains valid after either \overline{OE} is inactive, or both \overline{RAS} and \overline{CAS} are inactive, or \overline{CAS} is reactivated. When an early write is executed, the output buffers remain in a high-impedance state during the entire cycle.

HYPER PAGE MODE OF OPERATION

The hyper page mode operation provides faster memory access and lower power dissipation. The hyper page mode is implemented by keeping the same row address and strobing in successive column addresses. To satisfy these conditions, \overline{RAS} is held Low for all contiguous memory cycles in which row addresses are common. For each page of memory (within column address locations), any of 1,024x4-bits can be accessed and, when multiple MB814405Cs are used, \overline{CAS} is decoded to select the desired memory page. Hyper page mode operations need not be addressed sequentially and combinations of read, write, and/or read-modify-write cycles are permitted. Hyper page mode features that output remains valid when \overline{CAS} is inactive until \overline{CAS} is reactivated

DC CHARACTERISTICS

(Recommended operating conditions unless otherwise noted)

Notes 3

Paramter	Notes	Symbol	Conditions	Values			Unit
				Min	Typ	Max	
Output high voltage	1	V_{OH}	$I_{OH} = -5 \text{ mA}$	2.4	—	—	V
Output low voltage	1	V_{OL}	$I_{OL} = 4.2 \text{ mA}$	—	—	0.4	
Input leakage current (any input)		$I_{I(L)}$	$0V \leq V_{IN} \leq 5.5V$; $4.5V \leq V_{CC} \leq 5.5V$; $V_{SS} = 0V$; All other pins not under test = $0V$	-10	—	10	μA
Output leakage current		$I_{O(L)}$	$0V \leq V_{OUT} \leq 5.5V$; Data out disabled	-10	—	10	
Operating current (Average Power supply current)	MB814405C-60	I_{CC1}	RAS & CAS cycling; $t_{RC} = \text{min}$	—	—	61	mA
	MB814405C-70					54	
Standby current (Power supply current)	TTL level	I_{CC2}	$RAS = CAS = V_{IH}$	—	—	2.0	mA
	CMOS level		$RAS = CAS \geq V_{CC} - 0.2V$			1.0	
Refresh current #1 (Average power sup- ply current)	MB814405C-60	I_{CC3}	$CAS = V_{IH}$, RAS cycling; $t_{RC} = \text{min}$	—	—	61	mA
	MB814405C-70					54	
Hyper Page Mode current	MB814405C-60	I_{CC4}	RAS = V_{IL} , CAS cycling; $t_{HPC} = \text{min}$	—	—	66	mA
	MB814405C-70					55	
Refresh current #2 (Average power sup- ply current)	MB814405C-60	I_{CC5}	RAS cycling; CAS-before-RAS; $t_{RC} = \text{min}$	—	—	49	mA
	MB814405C-70					44	
Refresh current #3 (Average power supply current)	MB814405C-60	I_{CC9}	RAS = CAS $\leq 0.2V$ Self refresh	—	—	1000	μA
	MB814405C-70					1000	

– PRELIMINARY –

Edition 2.1

MB814405C-60

MB814405C-70

AC CHARACTERISTICS

(At recommended operating conditions unless otherwise noted.) Notes 3, 4, 5

No.	Parameter	Notes	Symbol	MB814405C-60		MB814405C-70		Unit
				Min	Max	Min	Max	
1	Time Between Refresh		t_{REF}	—	16.4	—	16.4	ms
2	Random Read/Write Cycle Time		t_{RC}	104	—	119	—	ns
3	Read-Modify-Write Cycle Time		t_{RWC}	138	—	156	—	ns
4	Access Time from RAS	6,9	t_{RAC}	—	60	—	70	ns
5	Access Time from \overline{CAS}	7,9	t_{CAC}	—	15	—	20	ns
6	Column Address Access Time	8,9	t_{AA}	—	30	—	35	ns
7	Output Hold Time		t_{OH}	5	—	5	—	ns
8	Output Hold Time from \overline{CAS}		t_{OHC}	5	—	5	—	ns
9	Output Buffer Turn On Delay Time		t_{ON}	0	—	0	—	ns
10	Output Buffer Turn off Delay Time	10	t_{OFF}	—	15	—	15	ns
11	Output Buffer Turn Off Delay Time from RAS		t_{OFR}	—	15	—	15	ns
12	Output Buffer Turn Off Delay Time from \overline{WE}		t_{WEZ}	—	15	—	15	ns
13	Transition Time		t_T	1	50	1	50	ns
14	RAS Precharge Time		t_{RP}	40	—	45	—	ns
15	RAS Pulse Width		t_{RAS}	60	100000	70	100000	ns
16	RAS Hold Time		t_{RSH}	15	—	20	—	ns
17	\overline{CAS} to RAS Precharge Time	21	t_{CRP}	0	—	0	—	ns
18	RAS to \overline{CAS} Delay Time	11,12,22	t_{RCD}	14	45	14	50	ns
19	\overline{CAS} Pulse Width		t_{CAS}	10	10000	10	10000	ns
20	\overline{CAS} Hold Time		t_{CSH}	40	—	50	—	ns
21	\overline{CAS} Precharge Time (Normal)	19	t_{CPN}	10	—	10	—	ns
22	Row Address Set Up Time		t_{ASR}	0	—	0	—	ns
23	Row Address Hold Time		t_{RAH}	10	—	10	—	ns
24	Column Address Set Up Time		t_{ASC}	0	—	0	—	ns
25	Column Address Hold Time		t_{CAH}	10	—	10	—	ns
26	RAS to Column Address Delay Time	13	t_{RAD}	12	30	12	35	ns
27	Column Address to RAS Lead Time		t_{RAL}	30	—	35	—	ns
28	Column Address to \overline{CAS} Lead Time		t_{CAL}	23	—	28	—	ns
29	Read Command Set Up Time		t_{RCS}	0	—	0	—	ns
30	Read Command Hold Time Referenced to RAS	14	t_{RRH}	0	—	0	—	ns
31	Read Command Hold Time Referenced to \overline{CAS}	14	t_{RCH}	0	—	0	—	ns
32	Write Command Set Up Time	15	t_{WCS}	0	—	0	—	ns
33	Write Command Hold Time		t_{WCH}	10	—	10	—	ns
34	\overline{WE} Pulse Width		t_{WP}	10	—	10	—	ns
35	Write Command to RAS Lead Time		t_{RWL}	15	—	18	—	ns
36	Write Command to \overline{CAS} Lead Time		t_{CWL}	10	—	10	—	ns
37	DIN set Up Time		t_{DS}	0	—	0	—	ns
38	DIN Hold Time		t_{DH}	10	—	10	—	ns
39	RAS to \overline{WE} Delay Time		t_{RWD}	77	—	87	—	ns

– PRELIMINARY –

Edition 2.1

MB814405C-60

MB814405C-70

AC CHARACTERISTICS (Continued)

(At recommended operating conditions unless otherwise noted.) Notes 3, 4, 5

No.	Parameter	Notes	Symbol	MB814405C-60		MB814405C-70		Unit
				Min	Max	Min	Max	
40	CAS to WE Delay Time		t_{CWD}	32	—	37	—	ns
41	Column Address to WE Delay Time		t_{AWD}	47	—	52	—	ns
42	RAS Precharge Time to CAS Active Time (Refresh cycles)		t_{RPC}	5	—	5	—	ns
43	CAS Set Up Time for CAS-before-RAS Refresh		t_{CSR}	0	—	0	—	ns
44	CAS Hold Time for CAS-before-RAS Refresh		t_{CHR}	10	—	10	—	ns
45	WE SetUp Time from RAS	20	t_{WSR}	0	—	0	—	ns
46	WE Hold Time from RAS	20	t_{WHR}	10	—	10	—	ns
47	Access Time from OE	9	t_{OEA}	—	15	—	20	ns
48	Output Buffer Turn Off Delay from OE	10	t_{OEZ}	—	15	—	15	ns
49	OE to RAS Lead Time for Valid Data		t_{OEL}	10	—	10	—	ns
50	OE to CAS Lead Time		t_{COL}	5	—	5	—	ns
51	OE Hold Time Referenced to WE	16	t_{OEH}	0	—	0	—	ns
52	OE to Data In Delay Time		t_{OED}	15	—	15	—	ns
53	DIN to CAS Delay Time	17	t_{DZC}	0	—	0	—	ns
54	DIN to OE Delay Time	17	t_{DZO}	0	—	0	—	ns
55	OE Precharge Time		t_{OEP}	10	—	10	—	ns
56	OE Hold Time Referenced to CAS		t_{OECH}	10	—	10	—	ns
57	WE Precharge Time		t_{WPZ}	10	—	10	—	ns
58	WE to Data In Delay Time		t_{WED}	15	—	15	—	ns
59	RAS to Data In Delay Time		t_{RDD}	15	—	15	—	ns
60	CAS to Data In Delay Time		t_{CDD}	15	—	15	—	ns
61	RAS to Column Address Hold Time		t_{AR}	26	—	26	—	ns
62	Write Command Hold Time Referenced to RAS		t_{WCR}	24	—	24	—	ns
63	Data Input Hold Time Referenced to RAS		t_{DHR}	24	—	24	—	ns
64	Hyper Page Mode Read/Write Cycle Time		t_{HPC}	25	—	30	—	ns
65	Hyper Page Mode Read-Modify-Write Cycle Time		t_{HPRWC}	66	—	71	—	ns
66	Access Time from CAS Precharge	9,18	t_{CPA}	—	35	—	40	ns
67	Hyper Page Mode CAS Precharge Time		t_{CP}	10	—	10	—	ns
68	Hyper Page Mode RAS Pulse Width		t_{RASP}	—	200000	—	200000	ns
69	Hyper Page Mode RAS Hold Time from CAS Precharge		t_{RHCP}	35	—	40	—	ns
70	Hyper Page Mode CAS Precharge to WE Delay Time		t_{CPWD}	52	—	57	—	ns

– PRELIMINARY –

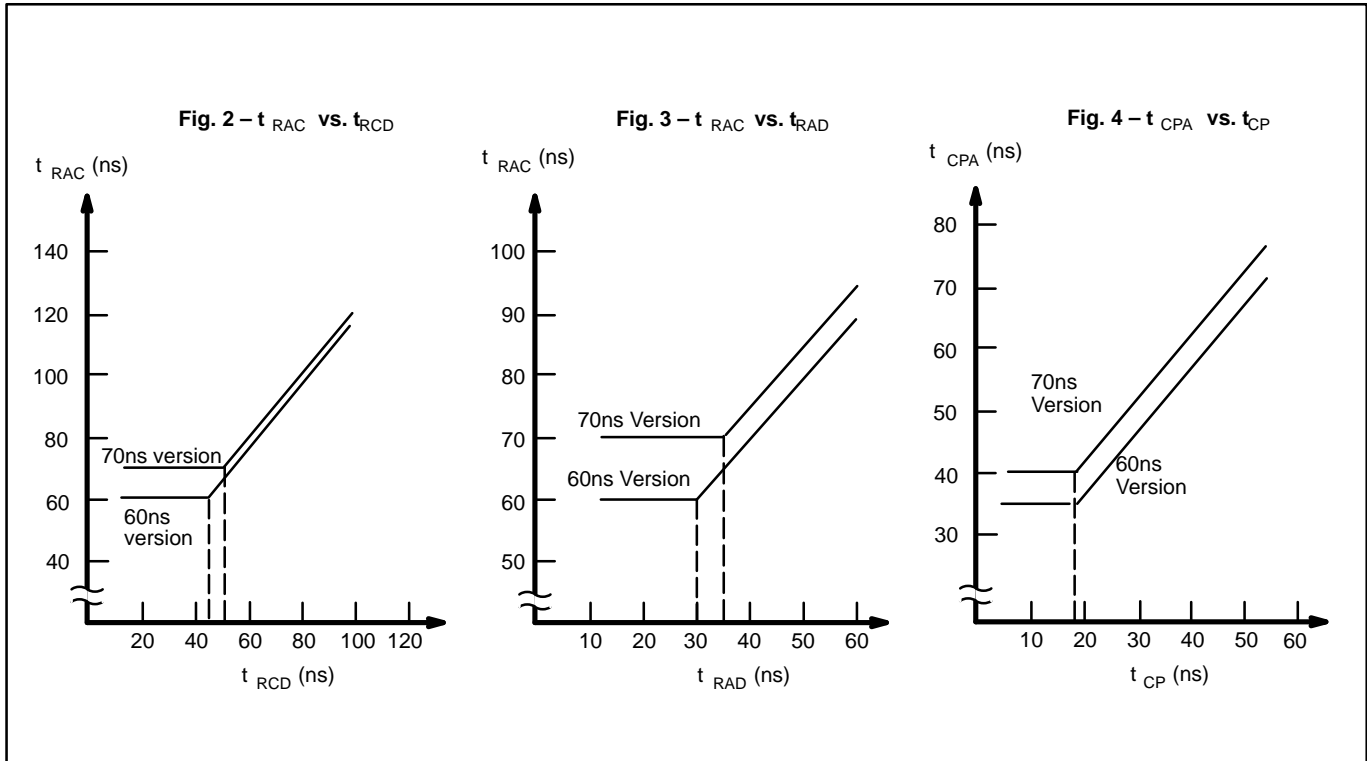
Edition 2.1

MB814405C-60

MB814405C-70

Notes:

1. Referenced to VSS.
2. I_{CC} depends on the output load conditions and cycle rates; The specified values are obtained with the output open.
 I_{CC} depends on the number of address change as $\overline{RAS}=V_{IL}$ and $\overline{CAS}=V_{IH}$
 I_{CC1} , I_{CC3} and I_{CC5} are specified at one time of address change during $\overline{RAS}=V_{IL}$ and $\overline{CAS}=V_{IH}$.
 I_{CC4} is specified at one time of address change during one Page cycle.
3. An Initial pause ($\overline{RAS}=\overline{CAS}=V_{IH}$) of 200 μ s is required after power-up followed by any eight \overline{RAS} -only cycles before proper device operation is achieved. In case of using internal refresh counter, a minimum of eight \overline{CAS} -before- \overline{RAS} initialization cycles instead of 8 \overline{RAS} cycles are required.
4. AC characteristics assume $t_T = 2$ ns.
5. V_{IH} (min) and V_{IL} (max) are reference levels for measuring timing of input signals. Also transition times are measured between V_{IH} (min) and V_{IL} (max).
6. Assumes that $t_{RCD} \leq t_{RCD}(\max)$, $t_{RAD} \leq t_{RAD}(\max)$. If t_{RCD} is greater than the maximum recommended value shown in this table, t_{RAC} will be increased by the amount that t_{RCD} exceeds the value shown. Refer to Fig. 2 and 3.
7. If $t_{RCD} \geq t_{RCD}(\max)$, $t_{RAD} \geq t_{RAD}(\max)$, and $t_{ASC} \geq t_{AA} - t_{CAC} - t_T$, access time is t_{CAC} .
8. If $t_{RAD} \geq t_{RAD}(\max)$ and $t_{ASC} \leq t_{AA} - t_{CAC} - t_T$, access time is t_{AA} .
9. Measured with a load equivalent to two TTL loads and 100 pF.
10. t_{OFF} and t_{OEZ} is specified that output buffer change to high impedance state.
11. Operation within the $t_{RCD}(\max)$ limit ensures that $t_{RAC}(\max)$ can be met. $t_{RCD}(\max)$ is specified as a reference point only; if t_{RCD} is greater than the specified $t_{RCD}(\max)$ limit, access time is controlled exclusively by t_{CAC} or t_{AA} .
12. $t_{RCD}(\min) = t_{RAH}(\min) + 2t_T + t_{ASC}(\min)$.
13. Operation within the $t_{RAD}(\max)$ limit ensures that $t_{RAC}(\max)$ can be met. $t_{RAD}(\max)$ is specified as a reference point only; if t_{RAD} is greater than the specified $t_{RAD}(\max)$ limit, access time is controlled exclusively by t_{CAC} or t_{AA} .
14. Either t_{RRH} or t_{RCH} must be satisfied for a read cycle.
15. t_{WCS} is specified as a reference point only. If $t_{WCS} \geq t_{WCS}(\min)$ the data output pin will remain High-Z state through entire cycle.
16. Assumes that $t_{WCS} < t_{WCS}(\min)$.
17. Either t_{DZC} or t_{DZO} must be satisfied.
18. t_{CPA} is access time from the selection of a new column address (that is caused by changing \overline{CAS} from "L" to "H"). Therefore, if t_{CP} is long, t_{CPA} is longer than $t_{CPA}(\max)$ as shown in Fig. 4.
19. Assumes that \overline{CAS} -before- \overline{RAS} refresh.
20. Assumes that Test mode function.
21. The last \overline{CAS} rising edge.
22. The first \overline{CAS} falling edge.



FUNCTIONAL TRUTH TABLE

Operation Mode	Clock Input				Address		Input Data		Refresh	Note
	RAS	CAS	WE	OE	Row	Column	Input	Output		
Standby	H	H	X	X	—	—	—	High-Z	—	
Read Cycle	L	L	H	L	Valid	Valid	—	Valid	Yes *	$t_{RCS} \geq t_{RCS} \text{ (min)}$
Write Cycle (Early Write)	L	L	L	X	Valid	Valid	Valid	High-Z	Yes *	$t_{WCS} \geq t_{WCS} \text{ (min)}$
Read-Modify- Write Cycle	L	L	H→L	L→H	Valid	Valid	Valid	Valid	Yes *	$t_{CWD} \geq t_{CWD} \text{ (min)}$
RAS-only Refresh Cycle	L	H	X	X	Valid	—	—	High-Z	Yes	
CAS-before- RAS Refresh Cycle	L	L	H	X	—	—	—	High-Z	Yes	$t_{CSR} \geq t_{CSR} \text{ (min)}$
Hidden Refresh Cycle	H→L	L	H	L	—	—	—	Valid	Yes	Previous data is kept.
Test mode Set Cycle (CBR)	L	L	L	X	—	—	—	High-Z	Yes	$t_{CSR} \geq t_{CSR} \text{ (min)}$ $t_{WSR} \geq t_{WSR} \text{ (min)}$
Test mode Set Cycle (Hidden)	H→L	L	L	X	—	—	—	Valid	Yes	$t_{CSR} \geq t_{CSR} \text{ (min)}$ $t_{WSR} \geq t_{WSR} \text{ (min)}$

X; "H" or "L"

*; It is impossible in Hyper Page Mode

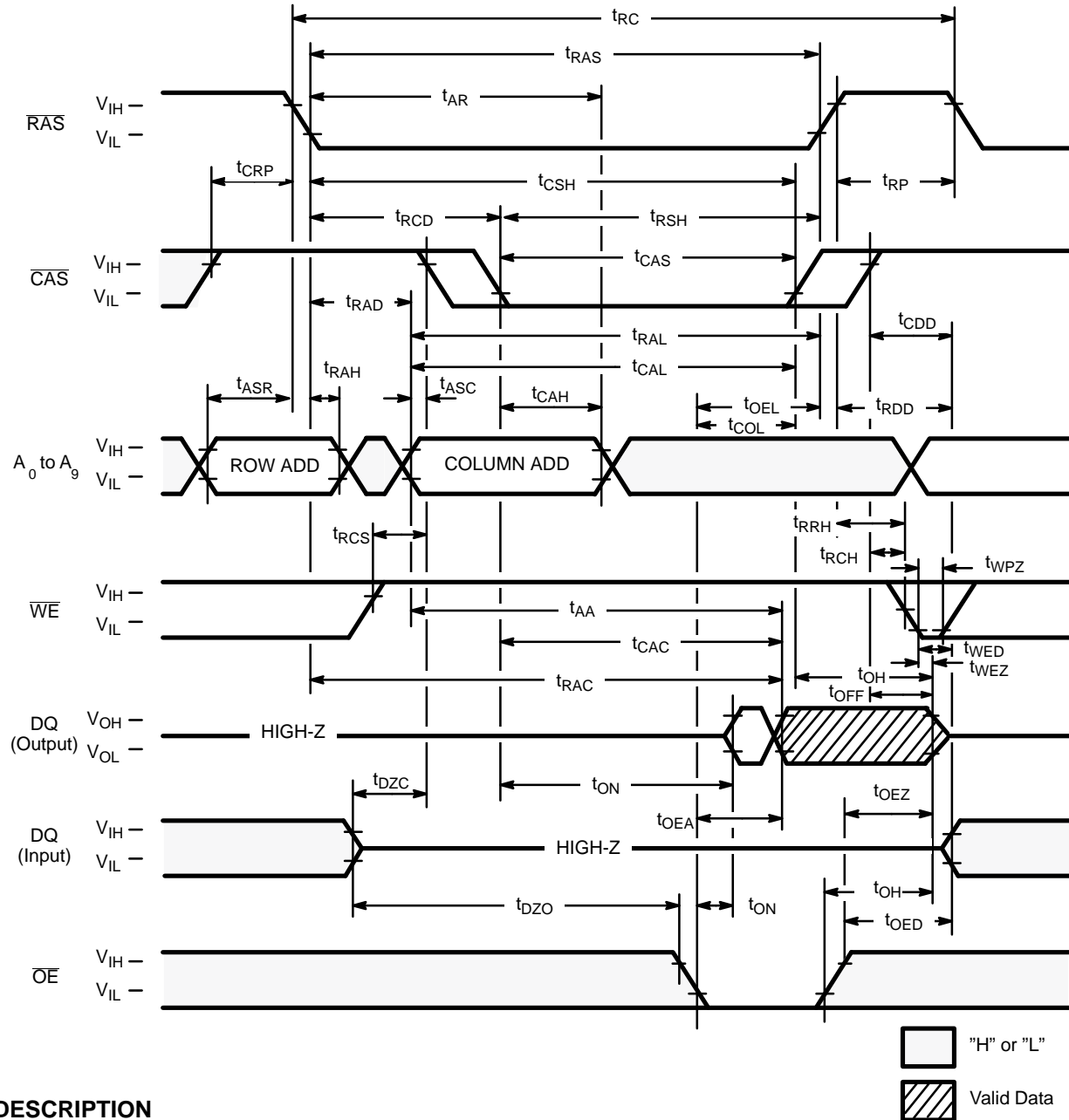
– PRELIMINARY –

Edition 2.1

MB814405C-60

MB814405C-70

Fig. 5 – READ CYCLE



DESCRIPTION

To implement a read operation, a valid address is latched by the \overline{RAS} and \overline{CAS} address strobes and with \overline{WE} set to a High level and \overline{OE} set to a low level, the output is valid once the memory access time has elapsed. The access time is determined by $\overline{RAS}(t_{RC})$, $\overline{CAS}(t_{CAC})$, $\overline{OE}(t_{OEA})$ or column addresses (t_{AA}) under the following conditions:

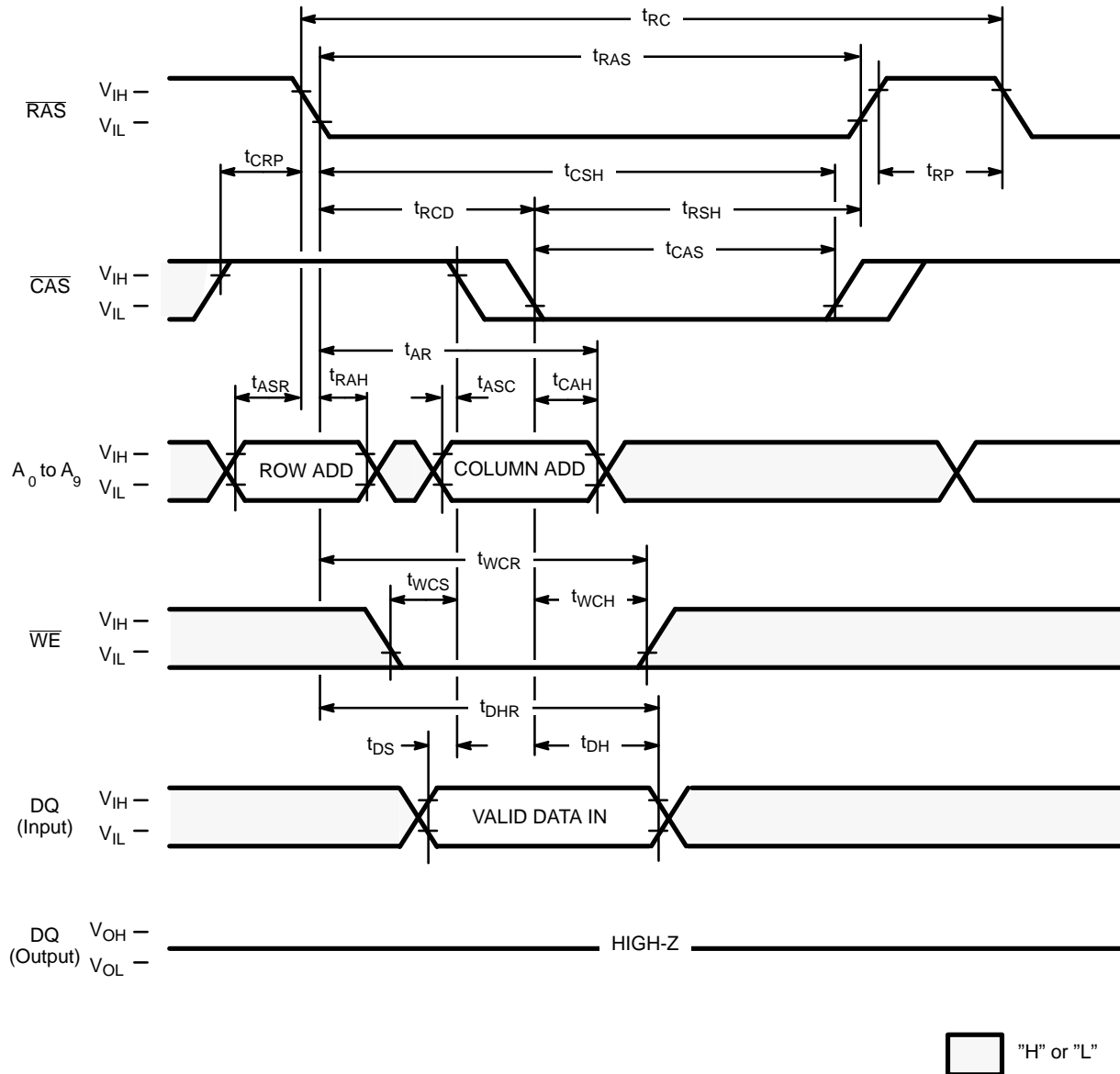
If $t_{RCD} > t_{RCD}(\max)$, access time = t_{CAC} .

If $t_{RAD} > t_{RAD}(\max)$, access time = t_{AA} .

If \overline{OE} is brought Low after t_{RAC} , t_{CAC} , or t_{AA} (whichever occurs later), access time = t_{OEA} .

However, if either \overline{OE} or both \overline{RAS} and \overline{CAS} or \overline{OE} goes High, the output returns to a high-impedance state after t_{OH} is satisfied.

Fig. 6 – EARLY WRITE CYCLE



DESCRIPTION

A write cycle is similar to a read cycle except \overline{WE} is set to a Low state and \overline{OE} is a "H" or "L" signal. A write cycle can be implemented in either of three ways – early write, delayed write, or read-modify-write. During all write cycles, timing parameters t_{RWL} , t_{CWL} , t_{RAL} and t_{CAL} must be satisfied. In the early write cycle shown above t_{WCS} satisfied, data on the DQ pins are latched with the falling edge of \overline{CAS} and written into memory.

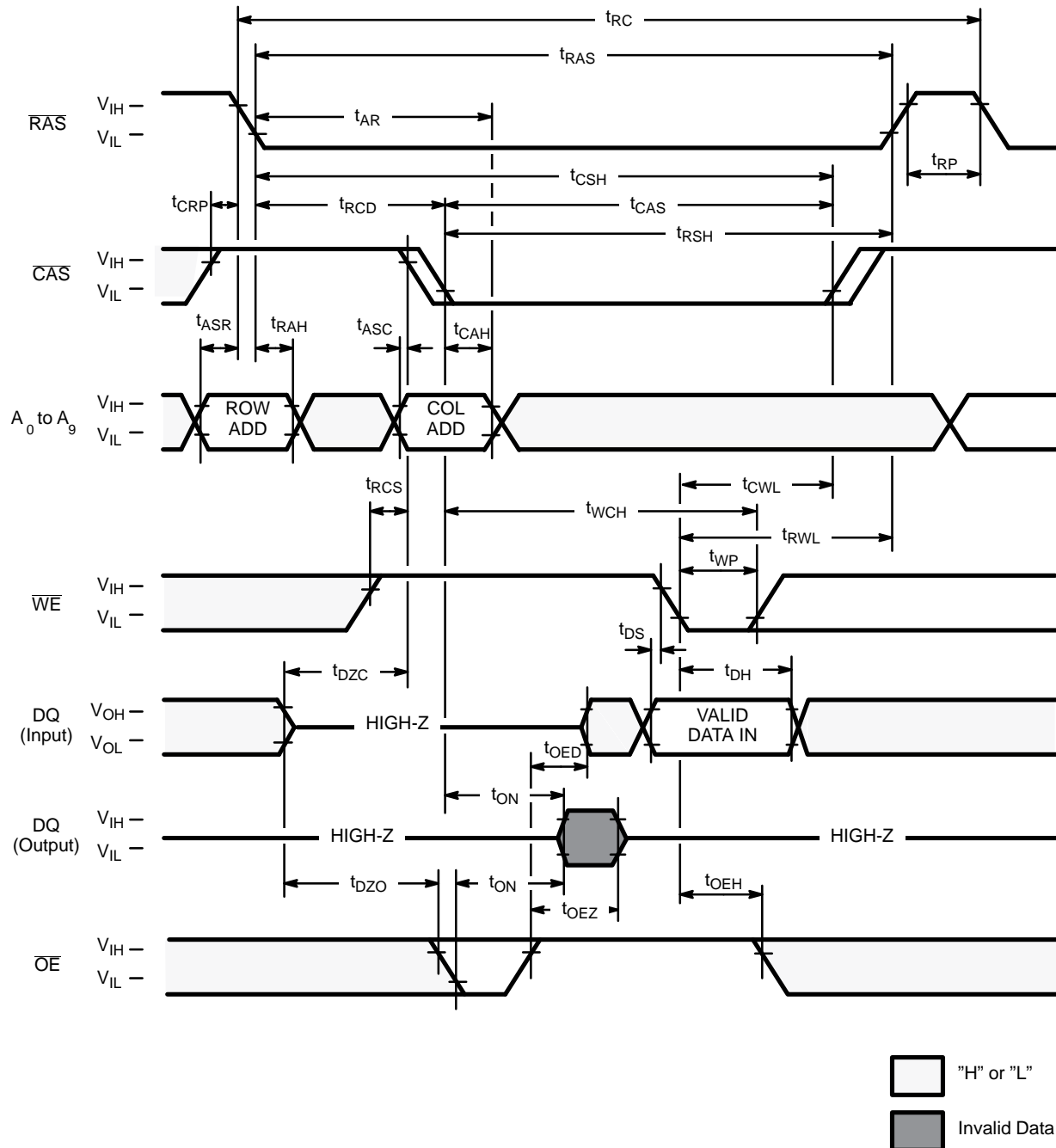
– PRELIMINARY –

Edition 2.1

MB814405C-60

MB814405C-70

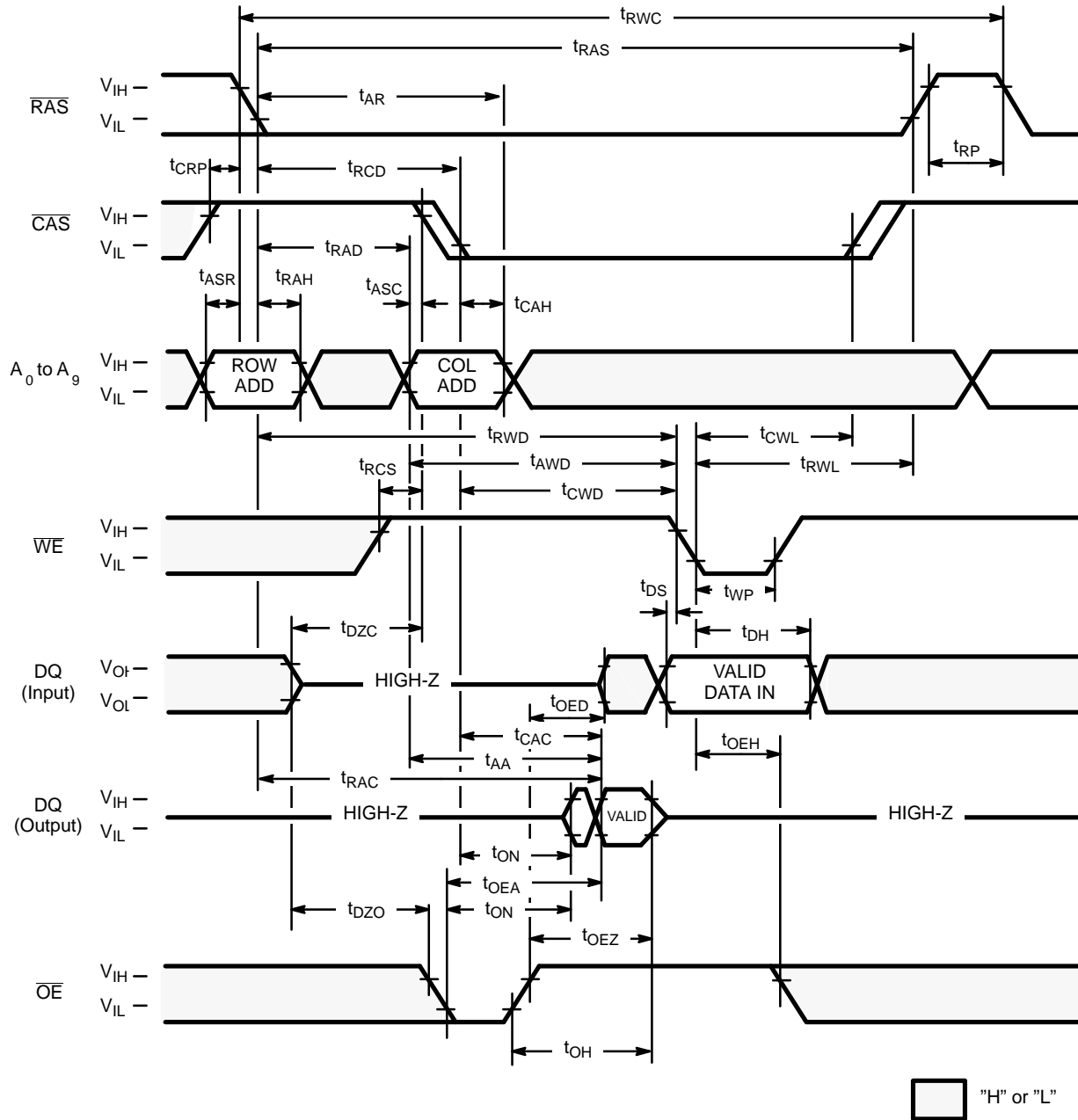
Fig. 7 – DELAYED WRITE CYCLE (OE CONTROLLED)



DESCRIPTION

In the delayed write cycle, t_{WCS} is not satisfied; thus, the data on the DQ pins is latched with the falling edge of \overline{WE} and written into memory. The Output Enable (\overline{OE}) signal must be changed from Low to High before \overline{WE} goes Low ($t_{OED} + t_T + t_{DS}$).



Fig. 8 – READ-MODIFY-WRITE-CYCLE



DESCRIPTION

The read-modify-write cycle is executed by changing \overline{WE} from High to Low after the data appears on the DQ pins. In the read-modify-write cycle, \overline{OE} must be changed from Low to High after the memory access time.

[illegible]

 "H" or "L"
 Valid Data

To obtain a high impedance state, set \overline{OE} or both \overline{RAS} and \overline{CAS} going high level.

[illegible]

☐ "H" or "L"

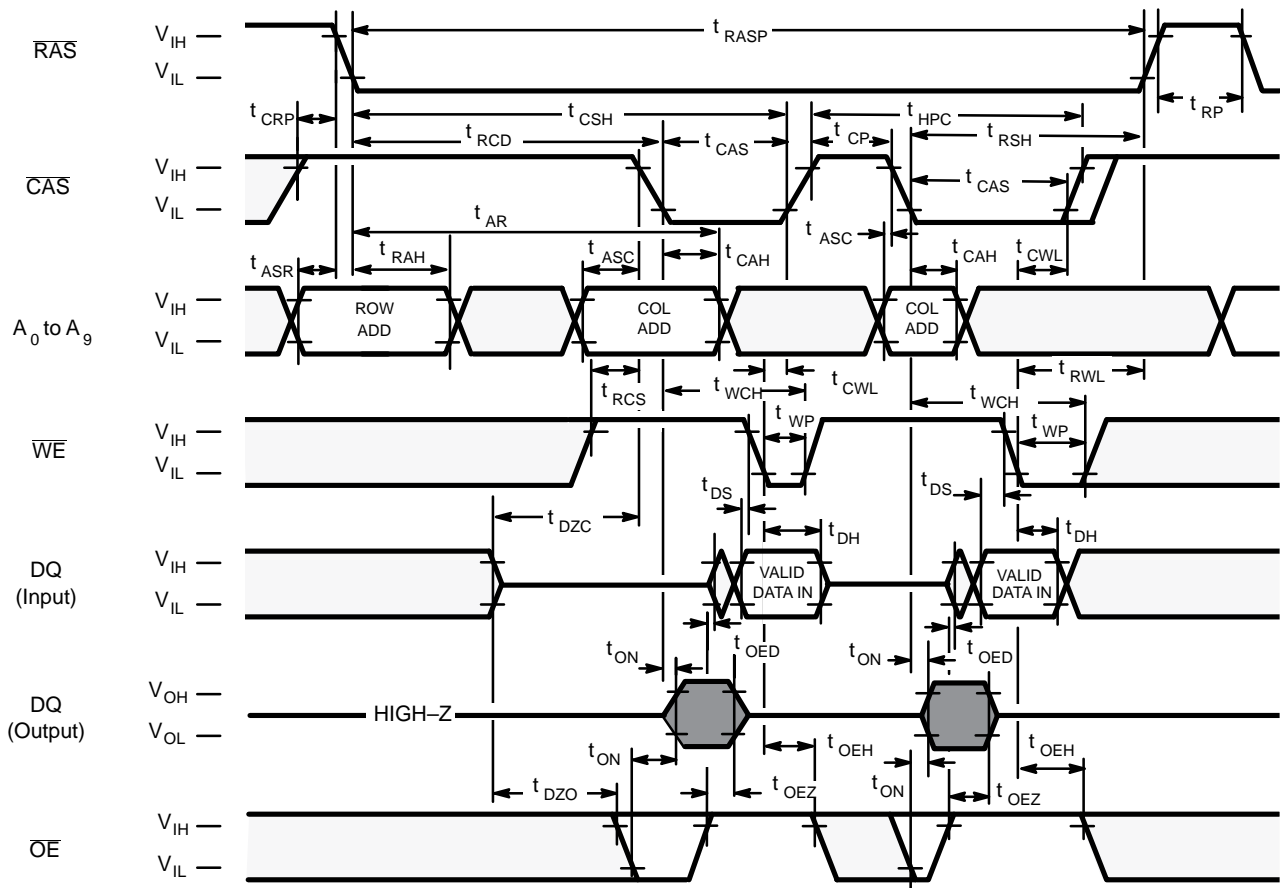
The hyper page mode early write cycle is executed in the same manner as the hyper page mode read cycle except WE is set to a low state and OE is a "H" or "L" signal. Data appearing on the DQ pins is latched on the falling edge of $\overline{\text{CAS}}$ and the data is written into the memory. During the hyper page mode write cycle, including the delayed ($\overline{\text{OE}}$) write and read-modify-write cycles, t_{CWL} must be satisfied.

Edition 2.1

MB814405C-60

MB814405C-70

Fig. 13 – HYPER PAGE MODE DELAYED WRITE CYCLE ($\overline{\text{OE}}$ CONTROLLED)





“H” or “L”

 Invalid Data

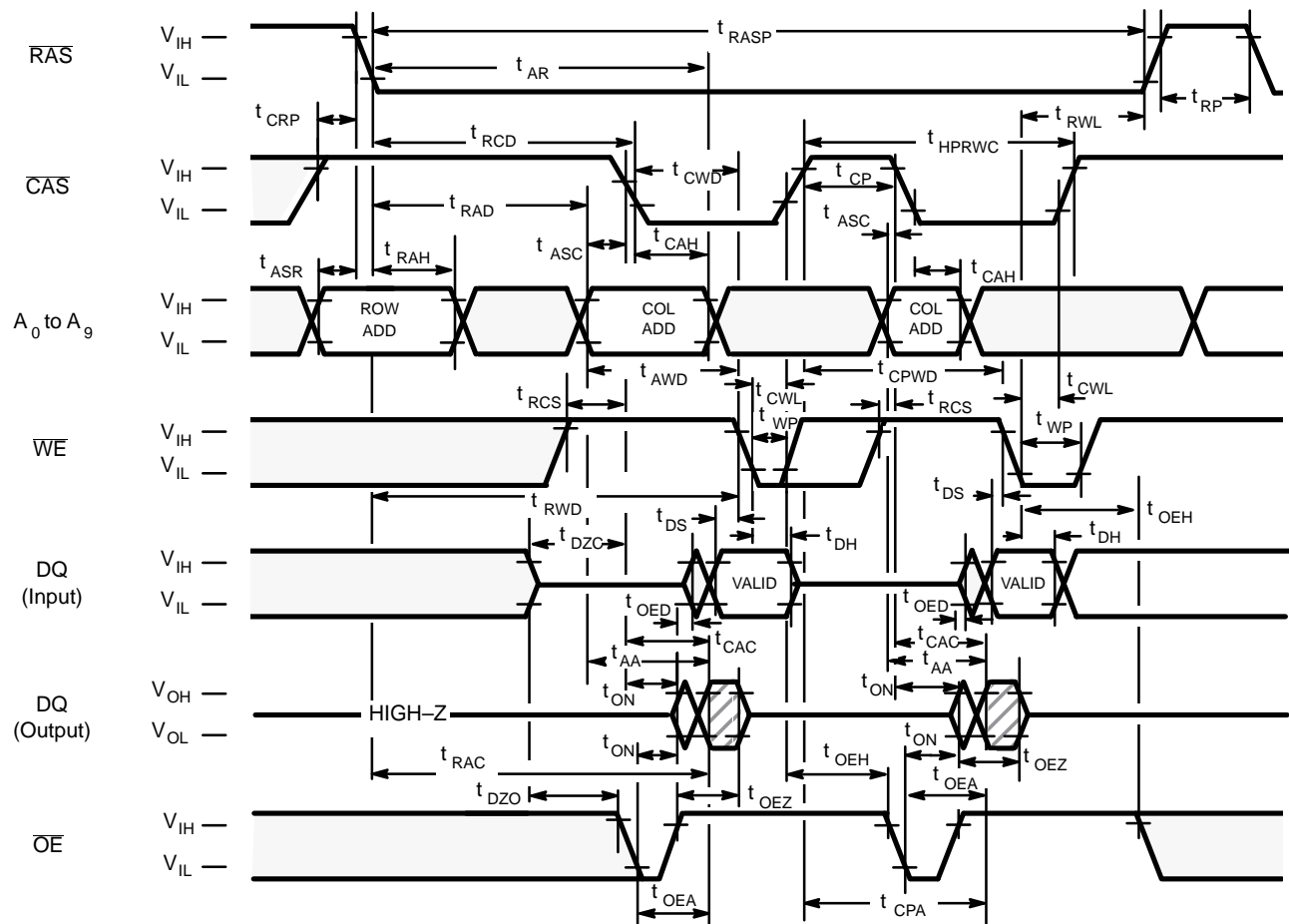
DESCRIPTION

The hyper page mode delayed write cycle is executed in the same manner as the hyper page mode early write cycle except for the states of $\overline{\text{WE}}$ and $\overline{\text{OE}}$. Input data on the DQ pins are latched on the falling edge of $\overline{\text{WE}}$ and written into memory. In the hyper page mode delayed write cycle, $\overline{\text{OE}}$ must be changed from Low to High before $\overline{\text{WE}}$ goes Low ($t_{\text{OED}} + t_{\text{T}} + t_{\text{DS}}$).

 "H" or "L"
 Valid Data

The hyper page mode performs read/write operations repetitively during one $\overline{\text{RAS}}$ cycle. At this time, t_{HPC} (min.) is invalid.

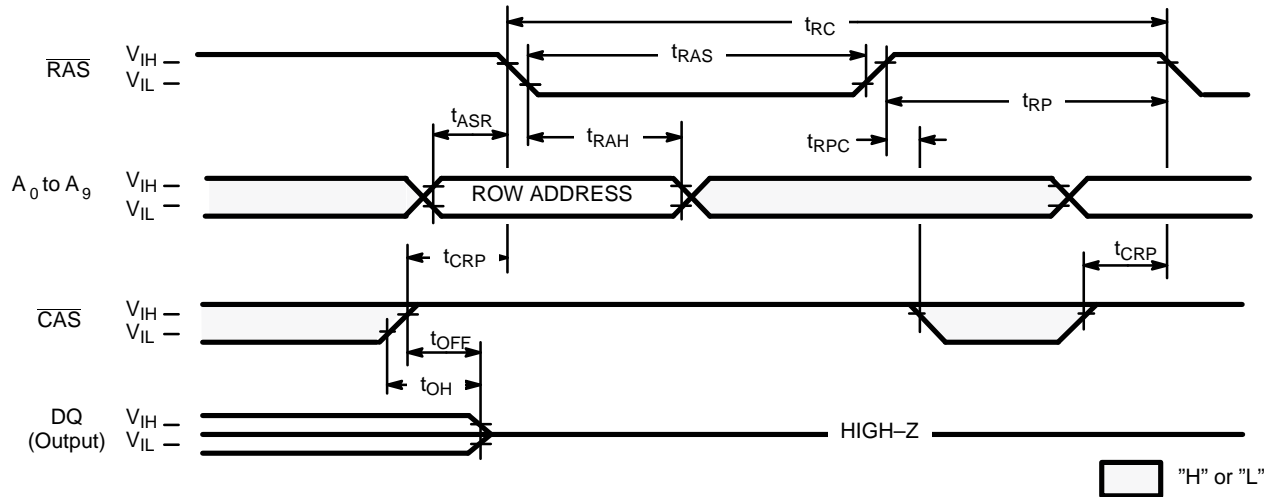
Fig. 15 – HYPER PAGE MODE READ MODIFY WRITE CYCLE



DESCRIPTION

During the hyper page mode of operation, the read-modify-write cycle can be executed by switching \overline{WE} from High to Low after input data appears at the DQ pins during a normal cycle.

Fig. 16 – RAS-ONLY REFRESH ($\overline{WE} = \overline{OE} = \text{"H" or "L"}$)

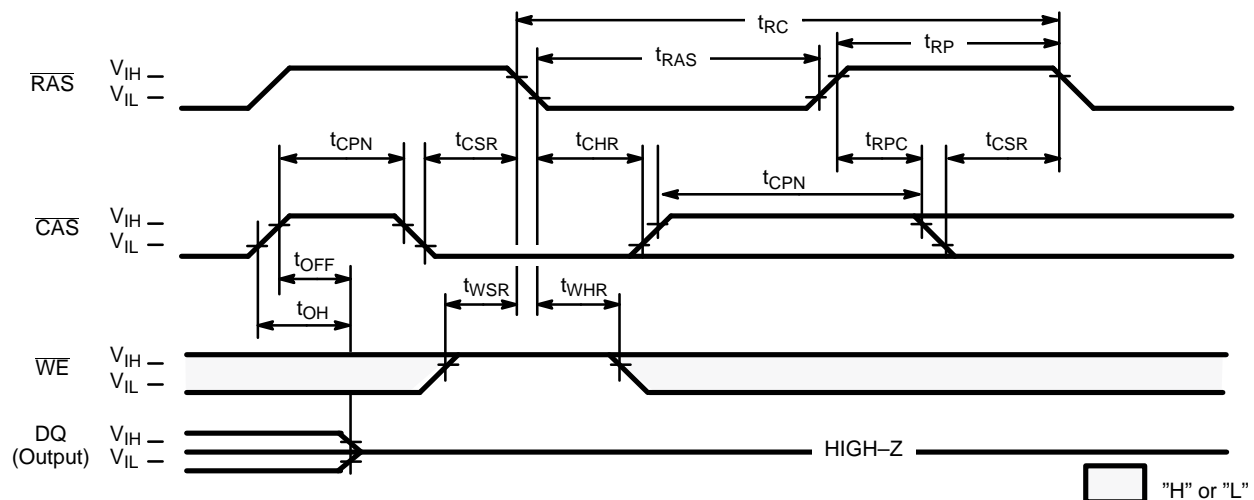


DESCRIPTION

Refresh of RAM memory cells is accomplished by performing a read, a write, or a read-modify-write cycle at each of 1,024 row addresses every 16.4-milliseconds. Three refresh modes are available: RAS-only refresh, \overline{CAS} -before-RAS refresh, and hidden refresh.

\overline{RAS} -only refresh is performed by keeping \overline{RAS} Low and \overline{CAS} High throughout the cycle; the row address to be refreshed is latched on the falling edge of \overline{RAS} . During \overline{RAS} -only refresh, DQ pins are kept in a high-impedance state.

Fig. 17 – \overline{CAS} -BEFORE- \overline{RAS} REFRESH (ADDRESSES = $\overline{OE} = \text{"H" or "L"}$)



DESCRIPTION

\overline{CAS} -before- \overline{RAS} refresh is an on-chip refresh capability that eliminates the need for external refresh addresses. If \overline{CAS} is held Low for the specified setup time (t_{CSR}) before \overline{RAS} goes Low, the on-chip refresh control clock generators and refresh address counter are enabled. An internal refresh operation automatically occurs and the refresh address counter is internally incremented in preparation for the next \overline{CAS} -before- \overline{RAS} refresh operation.

\overline{WE} must be held High for the specified set up time (t_{WSR}) before \overline{RAS} goes Low in order not to enter "TEST MOOD".

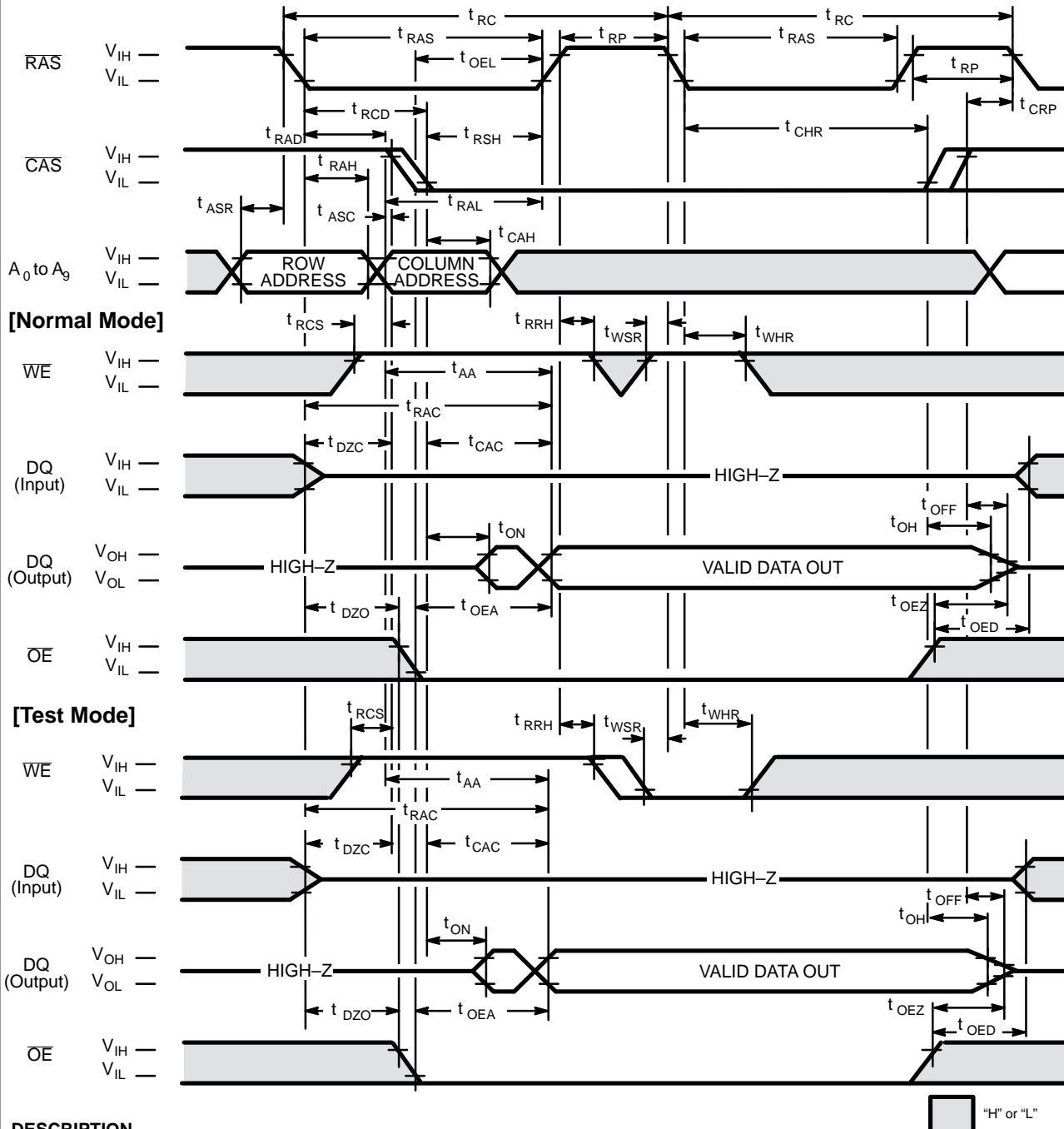
– PRELIMINARY –

Edition 2.1

MB814405C-60

MB814405C-70

Fig. 18 – HIDDEN REFRESH CYCLE

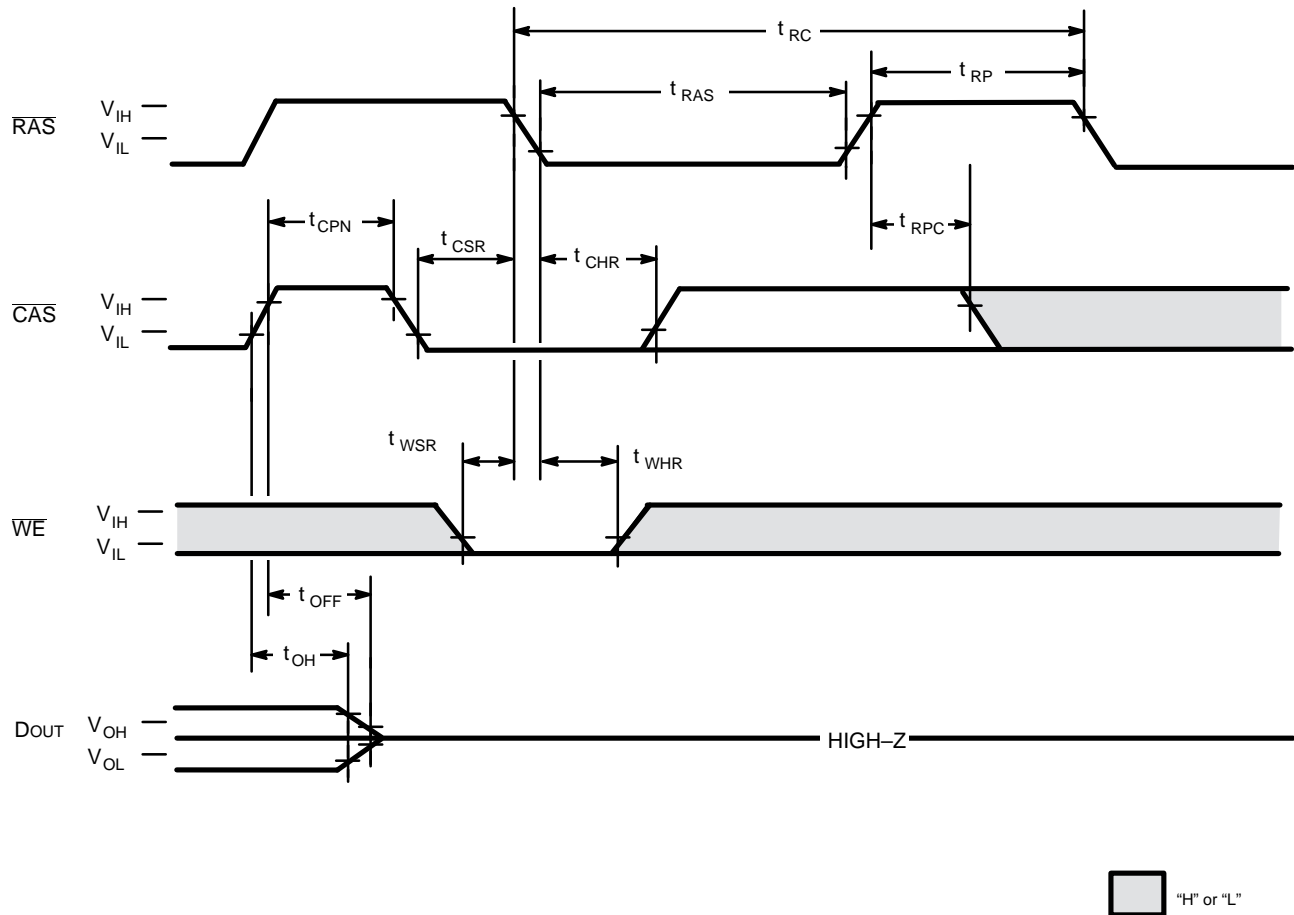


DESCRIPTION

A hidden refresh cycle may be performed while maintaining the latest valid data at the output by extending the active time of $\overline{\text{CAS}}$ and cycling $\overline{\text{RAS}}$. The refresh row address is provided by the on-chip refresh address counter. This eliminates the need for the external row address that is required by DRAMs that do not have $\overline{\text{CAS}}$ -before- $\overline{\text{RAS}}$ refresh capability.

$\overline{\text{WE}}$ must be held High for the specified set up time (t_{WSR}) before $\overline{\text{RAS}}$ goes Low in order not to enter "test mode".

Fig.19 – TEST MODE SET CYCLE (A0 to A9, \overline{OE} = "H" or "L")



DESCRIPTION

Test Mode ;

The purpose of this test mode is to reduce device test time to half of that required to test the device conventionally.

The test mode function is entered by performing a \overline{WE} and \overline{CAS} -before- \overline{RAS} (WCBR) refresh for the entry cycle.

In the test mode, read and write operations are executed in units of eight bits which are selected by the address combination of CA0. In the write mode, data is written into eight cells simultaneously. But the data must be input from all DQ pins. In the read mode, the data of eight cells at the selected addresses are read out from DQ and checked in the following manner.

When the eight bits are all "L" or all "H", a "H" level is output..

When the eight bits show a combination of "L" and "H", a "L" level is output..

The test mode function is exited by performing a \overline{RAS} -only refresh or a \overline{CAS} -before- \overline{RAS} refresh for the exit cycle.

In test mode operation, the following parameters are delayed approximately 5ns from the specified value in the data sheet..

t_{RC} , t_{RWC} , t_{RAC} , t_{AA} , t_{RAS} , t_{CSH} , t_{RAL} , t_{RWD} , t_{AWD} , t_{PC} , t_{PRWC} , t_{CPA} , t_{RHCP} , t_{CPWD}

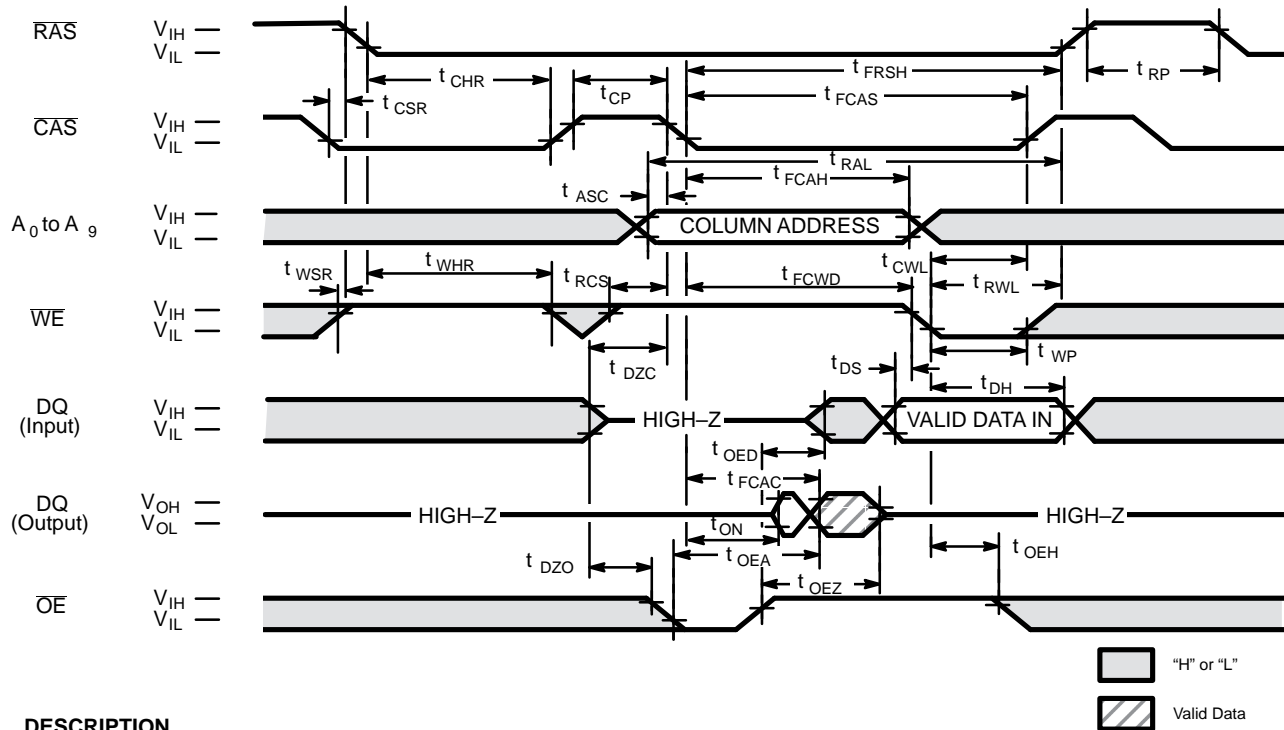
– PRELIMINARY –

Edition 2.1

MB814405C-60

MB814405C-70

Fig. 20 – $\overline{\text{CAS}}$ -BEFORE- $\overline{\text{RAS}}$ REFRESH COUNTER TEST CYCLE



DESCRIPTION

A special timing sequence using the $\overline{\text{CAS}}$ -before- $\overline{\text{RAS}}$ refresh counter test cycle provides a convenient method to verify the functionality of $\overline{\text{CAS}}$ -before- $\overline{\text{RAS}}$ refresh circuitry. If, after a $\overline{\text{CAS}}$ -before- $\overline{\text{RAS}}$ refresh cycle, $\overline{\text{CAS}}$ makes a transition from High to Low while $\overline{\text{RAS}}$ is held Low, read and write operations are enabled as shown above. Row and column addresses are defined as follows:

Row Address: Bits A0 through A9 are defined by the on-chip refresh counter.

Column Address: Bits A0 through A9 are defined by latching levels on A0–A9 at the second falling edge of $\overline{\text{CAS}}$.

The $\overline{\text{CAS}}$ -before- $\overline{\text{RAS}}$ Counter Test procedure is as follows ;

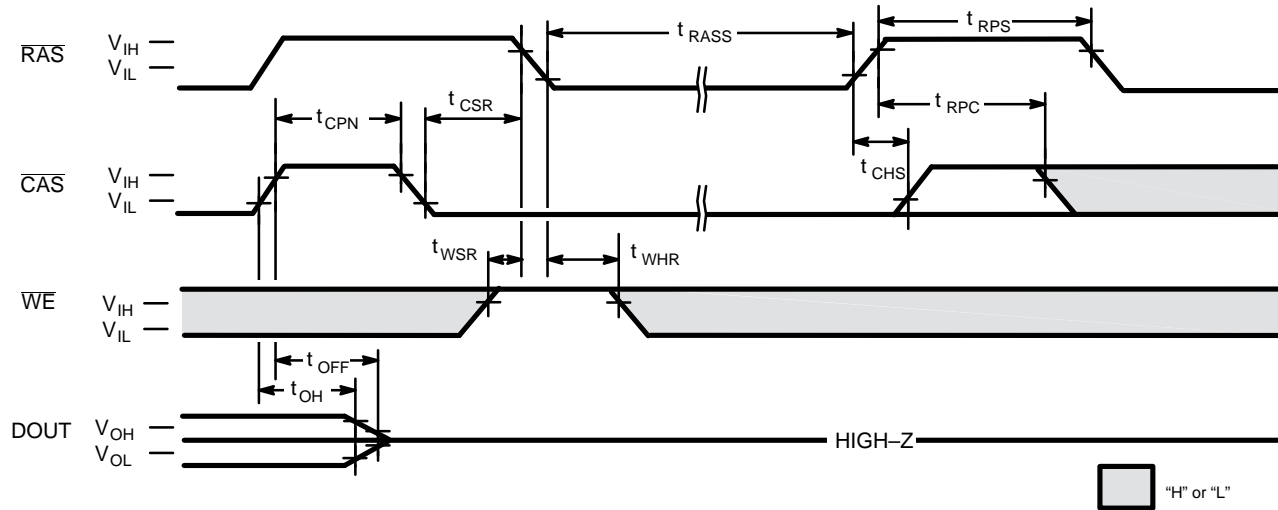
- 1) Initialize the internal refresh address counter by using 8 $\overline{\text{RAS}}$ only refresh cycles.
- 2) Use the same column address throughout the test.
- 3) Write "0" to all 1024 row addresses at the same column address by using normal write cycles.
- 4) Read "0" written in procedure 3) and check; simultaneously write "1" to the same addresses by using $\overline{\text{CAS}}$ -before- $\overline{\text{RAS}}$ refresh counter test (read-modify-write cycles). Repeat this procedure 1024 times with addresses generated by the internal refresh address counter.
- 5) Read and check data written in procedure 4) by using normal read cycle for all 1024 memory locations.
- 6) Reverse test data and repeat procedures 3), 4), and 5).

(At recommended operating conditions unless otherwise noted.)

No.	Parameter	Symbol	MB814405C-60		MB814405C-70		Unit
			Min	Max	Min	Max	
90	Access Time from $\overline{\text{CAS}}$	t_{FCAC}	—	35	—	40	ns
91	Column Address Hold Time	t_{FCAH}	30	—	30	—	ns
92	$\overline{\text{CAS}}$ to $\overline{\text{WE}}$ Delay Time	t_{FCWD}	55	—	60	—	ns
93	$\overline{\text{CAS}}$ Pulse width	t_{FCAS}	35	—	40	—	ns
94	$\overline{\text{RAS}}$ Hold Time	t_{FRSH}	35	—	40	—	ns

Note: Assumes that $\overline{\text{CAS}}$ -before- $\overline{\text{RAS}}$ refresh counter test cycle only.

Fig. 21 – SELF REFRESH CYCLE ($A0-A9 = \overline{OE} = "H" \text{ or } "L"$)



(At recommended operating conditions unless otherwise noted.)

No.	Parameter	Symbol	MB814405C-60		MB814405C-70		Unit
			Min	Max	Min	Max	
100	RAS pulse Width	t_{RASS}	100	—	100	—	μs
101	RAS precharge Time	t_{RPS}	104	—	119	—	ns
102	CAS Hold Time	t_{CHS}	-50	—	-50	—	ns

Note . Assumes self refresh cycle only

DESCRIPTION

The self refresh cycle provides a refresh operation without external clock and external Address. Self refresh control circuit on chip is operated in the self refresh cycle and refresh operation can be automatically executed using internal refresh address counter.

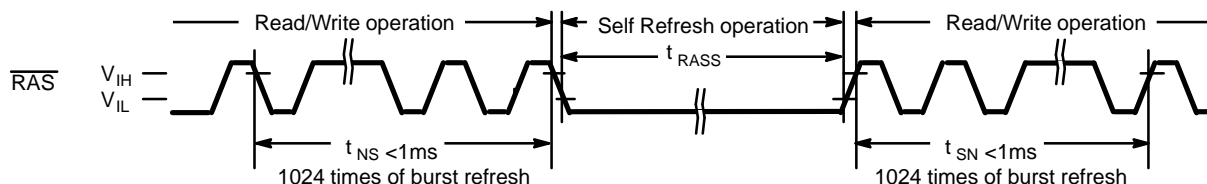
If \overline{CAS} goes to "L" before \overline{RAS} goes to "L" (CBR) and the condition of \overline{CAS} "L" and \overline{RAS} "L" is kept for term of t_{RASS} (more than 100 μs), the device can be entered the self refresh cycle. And after that, refresh operation is automatically executed per fixed interval using internal refresh address counter during " $\overline{RAS}=L$ " and " $\overline{CAS}=L$ ".

And exit from self refresh cycle is performed by toggling of \overline{RAS} and \overline{CAS} to "H" with specifying t_{CHS} min.

Restruction for Self refresh operation ;

For self refresh operation, the notice below must be considered.

- 1) In the case that distribute CBR refresh are operated in read/write cycles
Self refresh cycles can be executed without special rule if 1024 cycles of distribute CBR refresh are executed within $t_{REF} \text{ max.}$.
- 2) In the case that burst CBR refresh or \overline{RAS} only refresh are operated in read/write cycles
1024 times of burst CBR refresh or 1024 times of burst \overline{RAS} only refresh must be executed before and after Self refresh cycles.



– PRELIMINARY –

Edition 2.1

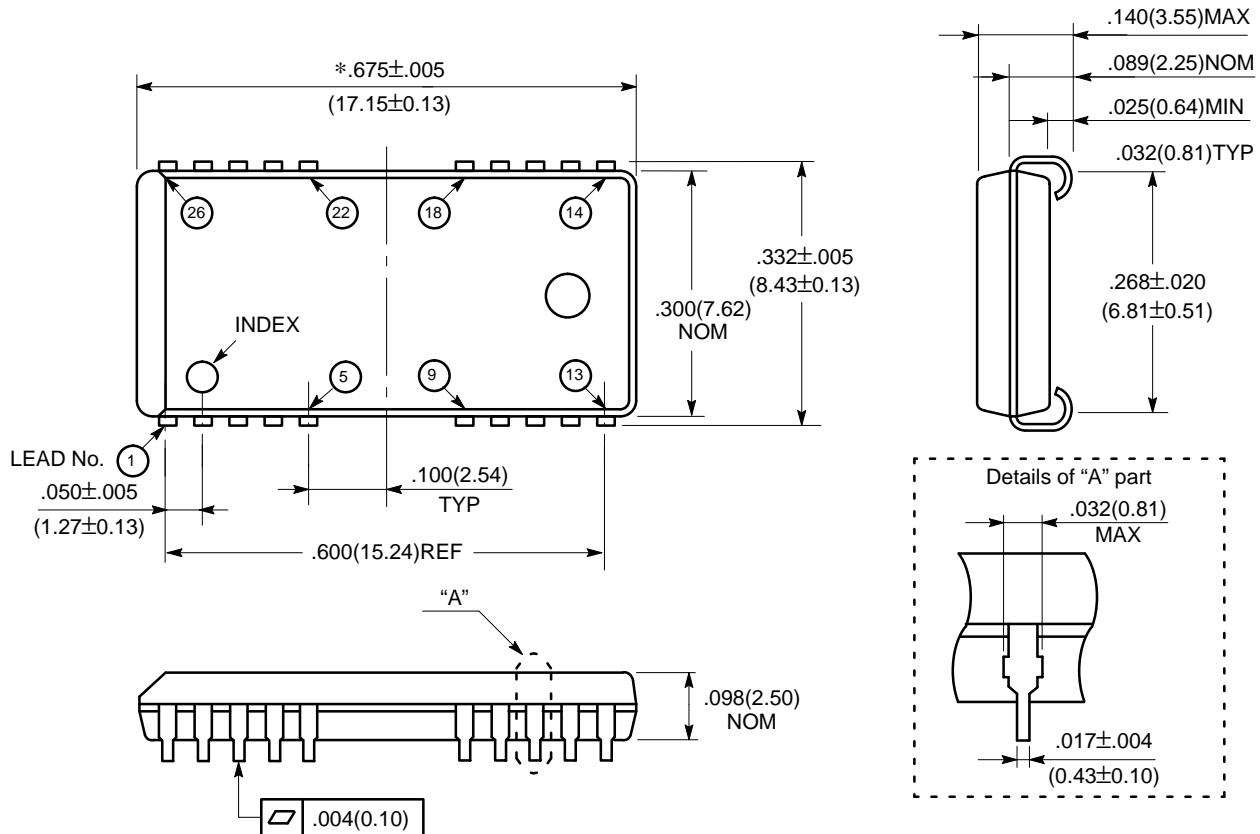
MB814405C-60

MB814405C-70

PACKAGE DIMENSIONS

(Suffix : -PJN)

26-LEAD PLASTIC LEADED CHIP CARRIER (CASE No.: LCC-26P-M04)



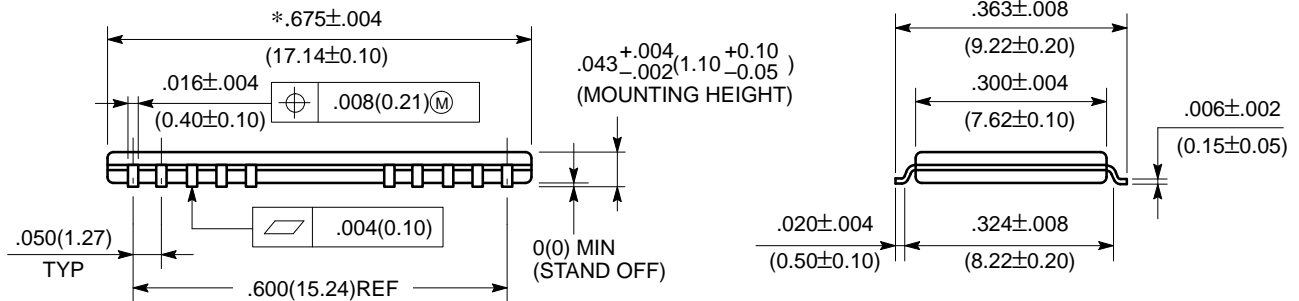
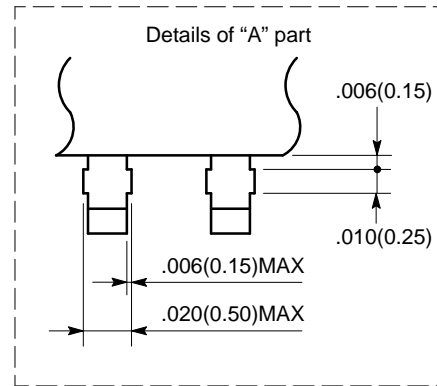
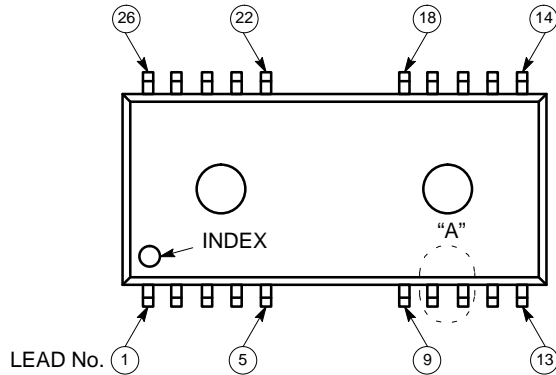
- Note:**
1. *:This dimension includes resin protrusion. (Each side: $.006$ (0.15) MAX)
 2. Although this package has 20 leads only, its pin positions are the same as that of 26-lead package.
 3. Dimensions in inches (millimeters)

©1993 FUJITSU LIMITED C26054S-3C-1

PACKAGE DIMENSIONS (Continued)

(Suffix : -PFTN)

26-LEAD PLASTIC FLAT PACKAGE (CASE No.: FPT-26P-M01)



* : This dimension includes resin protrusion.(Each side : .006(0.15) MAX)